



Hego

Sketch
DESIGNER CARPET PLANK

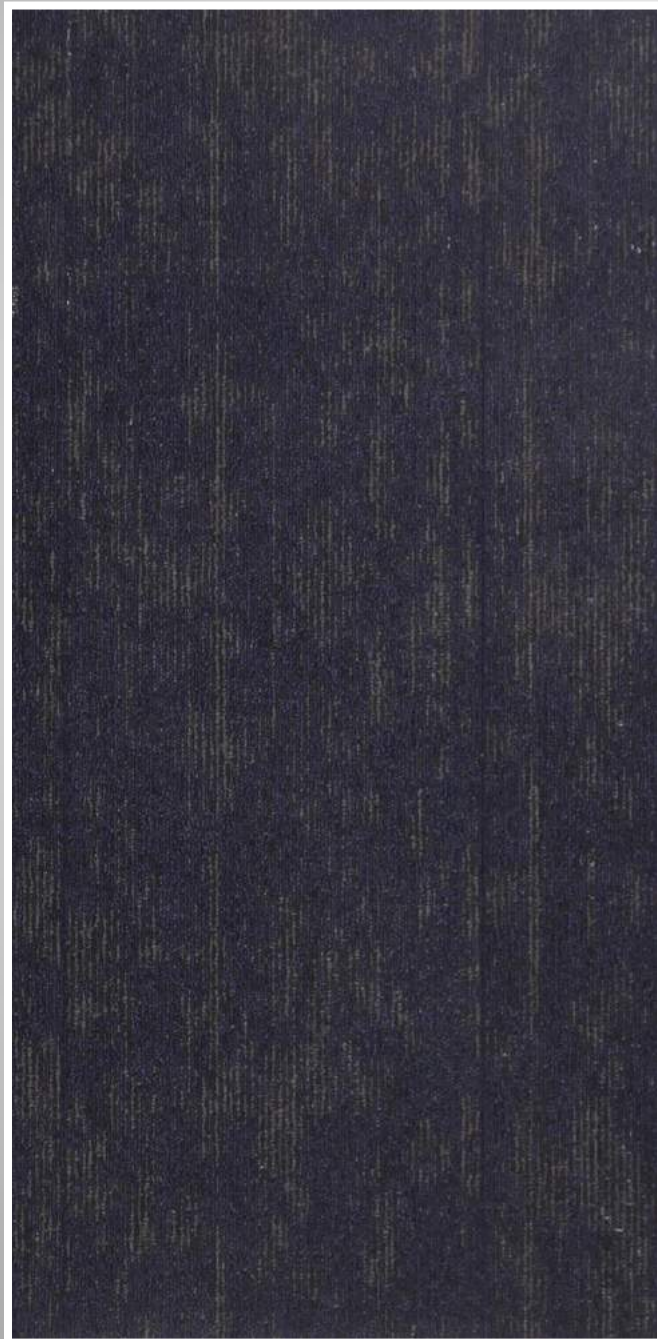
An evolution of traditional square carpet tiles, our 25 x 100 cm our Planks offer a new world of interior design possibilities, with greater flexibility, minimal waste and more creative freedom. Skinny Planks show what's possible outside the traditional carpet tile aesthetic. Use squares and planks together to create to expand your modular horizons, giving you the freedom to create fresh, exciting designs.

INDIGO - 2001,
GREY-2002 &
GREY - 2005 - H

Hego

What is the benefit of carpet tile without the look of carpet tile? Use a single style of Sketch planks, laid in ashlar pattern. They'll blend across the floor, giving you benefits of modularity and the continuous look of broadloom.

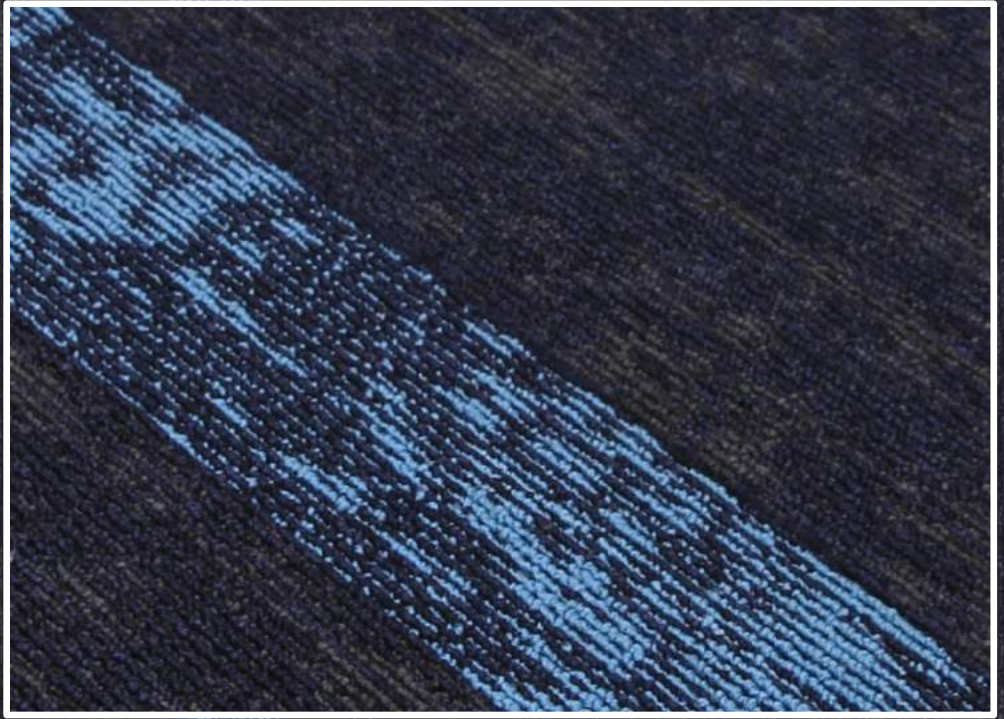
INDIGO - 2001



INDIGO - 2004 - H



INDIGO - 2001 &
INDIGO - 2004 - H



Hego

INDIGO - 2001 &
INDIGO - 2004 - H



Hegor



INDIGO - 2001



INDIGO - 2004 - H



GREY - 2001

Hego

INDIGO - 2001



INDIGO - 2001 &
INDIGO - 2004 - H



Hegro

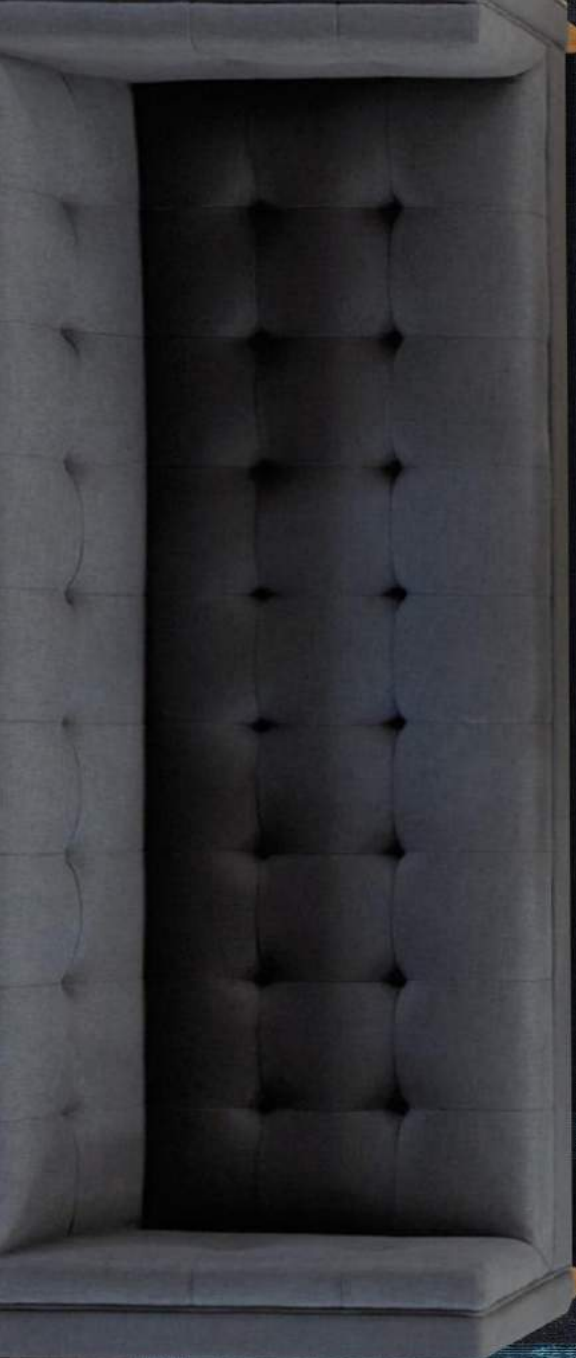


INDIGO - 2001,
INDIGO - 2004 - H &
GREY - 2005 - H

Hego

INDIGO - 2001 &
INDIGO - 2004 - H

Hego



INDIGO - 2001 &
INDIGO - 2004 - H

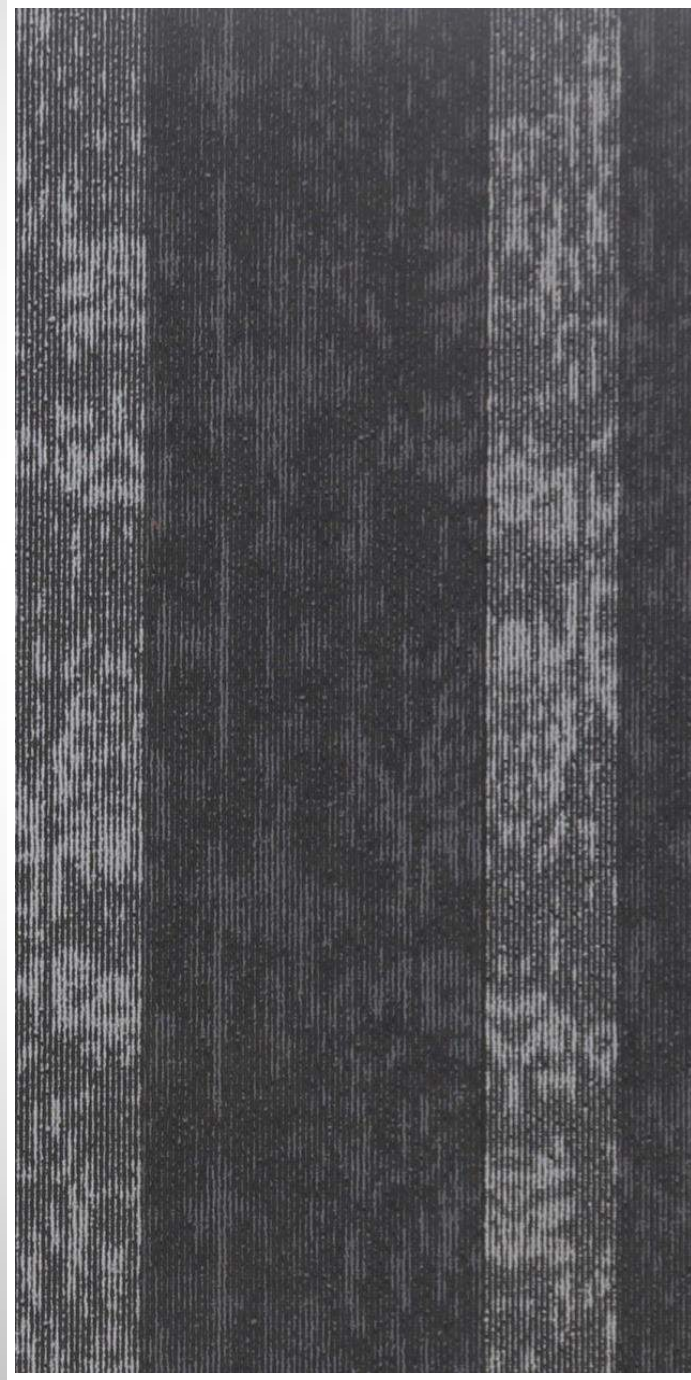
Hego

The scale and directionality of Sketch planks gives you an expanded range of design options which creates floors that reflect geometry and flow of surrounding spaces .

GREY - 2002



GREY - 2005 - H



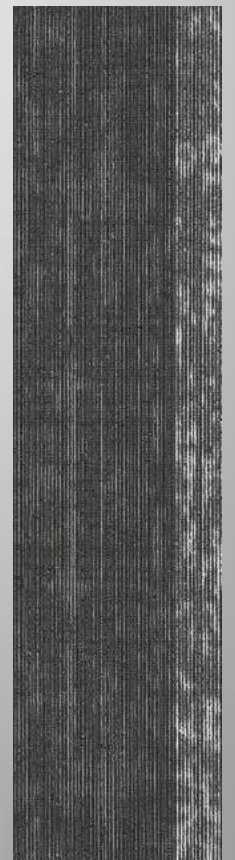


GREY - 2002 &
GREY - 2005 - H

Hego



GREY - 2001



GREY - 2005 - H

"Let food be thy medicine"

— Hippocrates

GREY - 2002 &
GREY - 2005 - H

Hego



INDIGO - 2001,
GREY - 2002
BROWN - 2003

Hego

GREY - 2002 &
GREY - 2005 - H



Hego

GREY - 2002
GREY - 2005 -

Hego

Love the look of abstract flooring? Patterns in Hego Sketch offer you same patterning possibilities. You also get a flooring that is soft, slip resistant and much more economical than a designer surface.

BROWN - 2003



BROWN - 2006 - H





BROWN - 2003 &
BROWN - 2006 - H

Hego

Hego®



BROWN - 2003



BROWN - 2006 - H

BROWN - 2003 &
BROWN - 2006 - H

Hego

BROWN - 2003 &
BROWN - 2006 - H

Hego



BROWN - 2003 &
BROWN - 2006 - H

Hego



BROWN - 2003 &
BROWN - 2006 - H

Hego




INDIGO - 2001,
GREY - 2002
BROWN - 2003

Hego

The Hego logo is written in a white, cursive, handwritten-style font in the top left corner of the image.

INDIGO - 2004-H,
GREY-2002 &
GREY - 2005 - H

The background of the advertisement is a close-up, top-down view of a floor made of interlocking square tiles. The tiles have a dark, charcoal grey color with a fine, wood-grain-like texture. Interspersed among these dark tiles are several lighter-colored tiles, some in shades of blue and others in shades of grey, creating a geometric pattern. In the lower right quadrant, one of the dark tiles is broken and displaced, revealing a white, square-shaped underlayment or adhesive block underneath. A small, purple, cube-shaped object is resting on top of this white block.

From how they're made to how they perform, we make outstanding floors that are truly sustainable. That's because our floors are good for people, good for buildings and good for the environment. So, from the building they're in to the world outside, we're helping our customers work, live and relax in better environments.

Technical Specifications

Construction -Multi Level Loop Pile

Material -100% Polypropylene

Pile Weight -5500 GSM

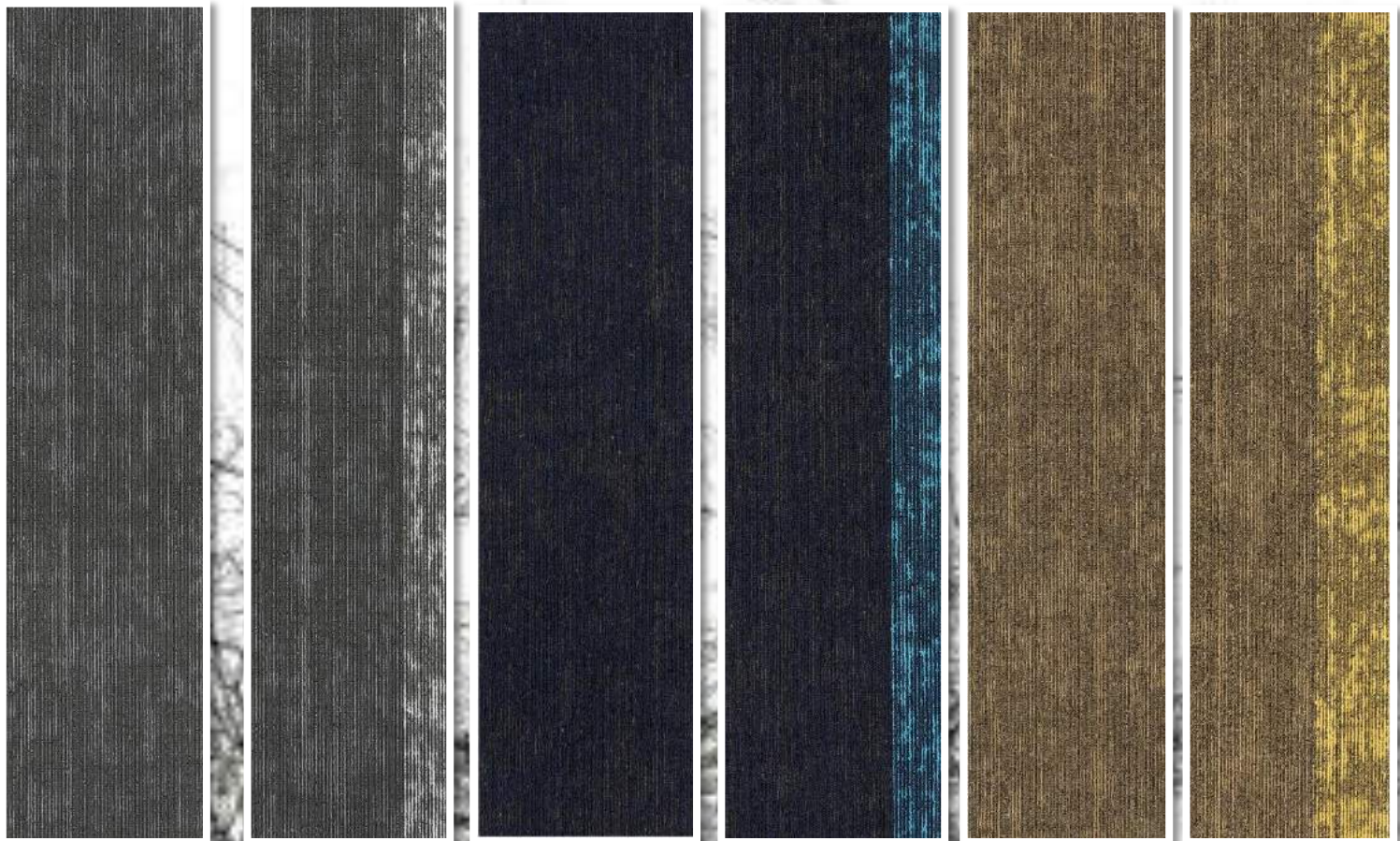
Pile Height -4 mm

Backing -Bitumen Backing

Size -25cm x 100cm

Qty. in Box -6 Sq. Meter

Area of Use -Commercial Heavy Duty



Hego

www.hego.co.in